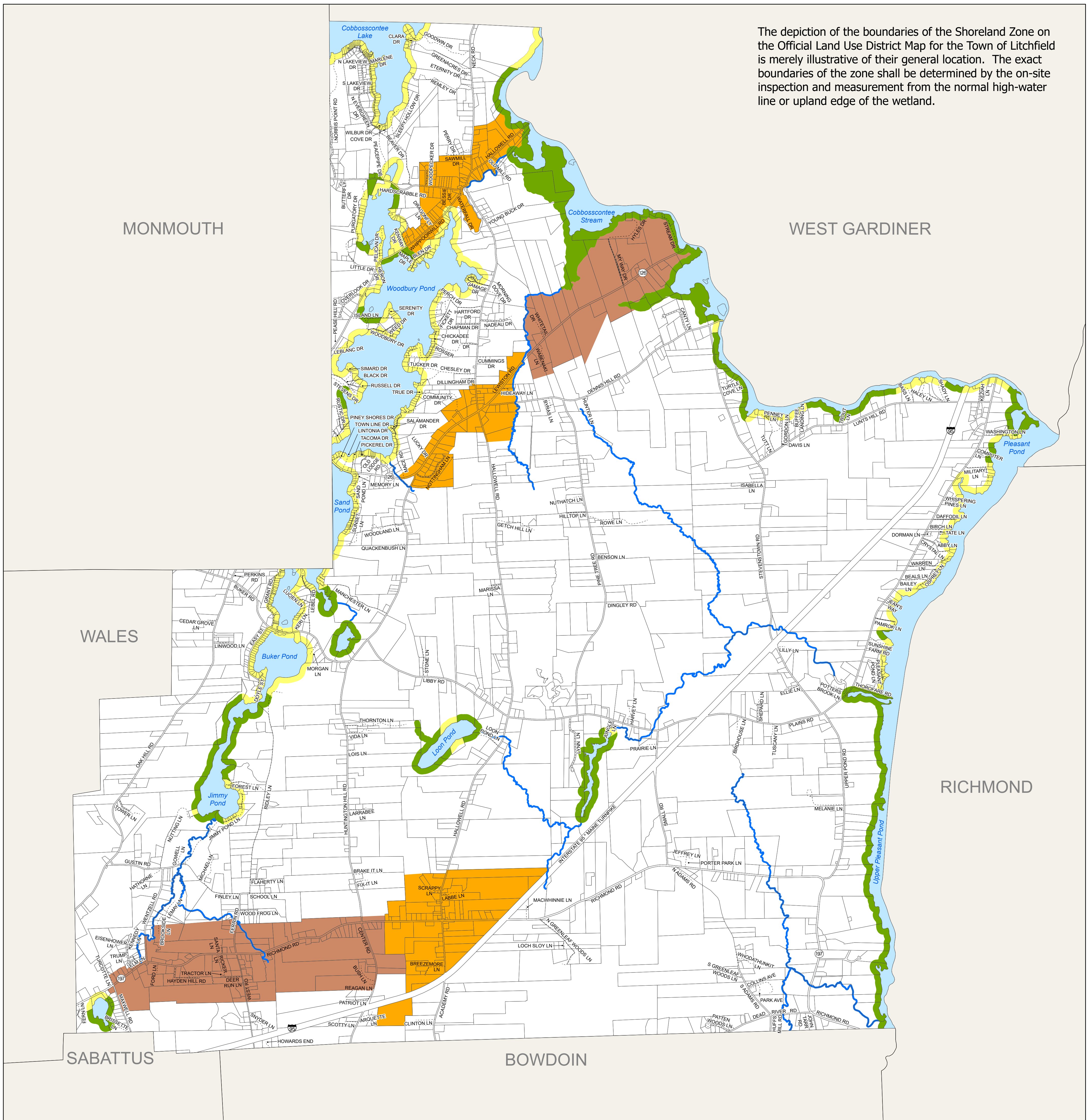


# LITCHFIELD, MAINE

## OFFICIAL LAND USE DISTRICT MAP

The depiction of the boundaries of the Shoreland Zone on the Official Land Use District Map for the Town of Litchfield is merely illustrative of their general location. The exact boundaries of the zone shall be determined by the on-site inspection and measurement from the normal high-water line or upland edge of the wetland.



0 0.5 1 Miles

### Zoning Districts

- R Rural District
- V Village District
- PD Planned Development District

### Shoreland Zoning Districts

- LR Limited Residential SZ
- RP Resource Protection SZ
- SP Stream Protection SZ

Parcels last updated in 2023.

### CERTIFICATION

MAP ADOPTED ON: \_\_\_\_\_

CERTIFIED BY: \_\_\_\_\_

Town Clerk



Source: Town of Litchfield and Maine Office of GIS  
Original map created by John E. O'Donnell Associates  
Updated by LatLong Logic, LLC (September, 2024)