

# The Litchfield Sodalite

Vol. XVIII No. 2

A Newsletter for Litchfield, Maine

February 1, 2018

## Historical Society Of Litchfield Trivia Quiz

**February question:** Which of Litchfield's four early villages never had a church building? **January question:** Toothaker Corner was located at the intersection of what two present day roads? **answer:** The Pine Tree and Plains Roads. To read more about the history of Litchfield go to [WWW.HistoricalSocietyofLitchfieldMaine.org](http://WWW.HistoricalSocietyofLitchfieldMaine.org)

## Tacoma Lakes Association

2017 was an outstanding year for the Association, and all of its members. The TLA continued its role in the maintenance of the dam to ensure long term stability and avoid the potentially huge expenses that other local communities have seen after neglecting their dams. This coming spring the final step in the sealing process will begin. A big thank you to the towns of Litchfield and Monmouth for recognizing the importance of the dam and its ongoing maintenance. 2017 also brought us a new membership record. 260 lake front property owners are now members of the Association. Our members are literally our oxygen, as without their support we would not exist. Our plant patrol program and buoy monitoring program continued in 2017. The threat of milfoil invasion, unfortunately is a threat that will never go away. With all of us monitoring our lakes any milfoil presence will, hopefully, be detected early and be eradicated quickly. The Board of Directors of TLA continue their work behind the scenes year round. Our Officers and Directors remain strong and committed to the overall well-being of our lakes. We, at TLA look forward to serving our members, and our communities in 2018.

## 4H The Creators

Meetings for February are the 12th and 26th. 5:00 to 6:30 pm at Carrie Ricker school. We also are doing community service and making cards for seniors and veterans on February 3rd at the Joann locations. Planning a vacation sliding day if snow is still around and we have a family day on February 4th at the Augusta Ice Vault for 4H awards and ice skating. For info call Lori at 754-3931

## RSU4 News

Kindergarten & Pre-K Registration 2018 – 19 -If you are a resident of Litchfield, Sabattus or Wales and have a child that will be 5 years old on or before October 15, 2018, please call to sign up for Kindergarten for the 2018-19 school year. Also, please call if you have a child that will be 4 years old on or before October 15, 2018 and you are interested in our Pre - Kindergarten program. You can call Sabattus Primary School at 375 - 4525 or Libby-Tozier School at 268-4137. **There will be** no school for students in Pre-K through grade 5 on Friday, 2/2/18 as it is a Flex Workshop day for the teachers in those grades. Those students who attend Oak Hill Middle School and High School will have classes as usual.

## Senior Center Corner

**The Center** will be closed on President's day 2/19/17.

**Bowling** will be on Thursday, 2/8 at 1-7-10 lanes in Augusta. Call 441-9005 for carpooling, we leave at 12.

**The book club** meeting is on Wednesday, 2/14 at 12:15 here at the Senior Center. The book to be discussed is "Head of Falls by Earl Smith.

**The pot luck lunch** and celebration of February birthdays is Friday, 2/16.

**Line dancing instruction** Mondays at 9:30 for beginners and advanced. Aerobics on Wednesday and Friday at 8:30.

Music practice is at 10 on Wednesdays. If you like to sing and/or play an instrument join us.

**Awareness through Movement** class exercises 9:30 on Fridays.

**Cribbage games** for fun on Mondays at 11 and Fridays 10-12. Bring a lunch and stay for bingo on Mondays in the afternoon & on Friday cards.

**The thrift shop** is open the first Monday 10-11 in February only.

**The Senior's Advisory** Committee meeting is at 10 on Thursday 2/15.

**The next date** for making cards with Anne Thompson is Wed. March 21, 1-3 p.m. We will be making Easter cards.

**Please call** or stop in to sign up.

**Reminder:** Exercise equipment and Wii games are available for use 9-4 Monday and Friday; 8:30-12 Wednesday.

Come in and use the equipment here, save a trip to Lewiston or Augusta.

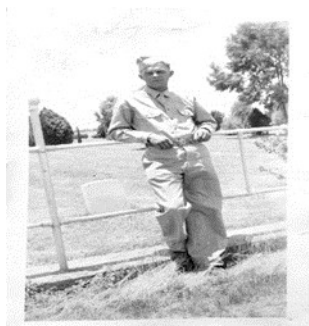
**Please stop in to** the Senior Center for more information, a cup of coffee or tea. Need something to do at home during the cold weather, come and get a book (paperback & hard cover), or pick up a puzzle - we have a good variety of sizes. We also have a supply of DVD's and VHS tapes as well as CD books.

## Litchfield Academy Thrift Shop

Tired of that winter wardrobe yet? Come in to pick up a few new (to you) items to carry you over to when the spring items come out of storage. Our bargain prices won't break the budget. We'll be scheduling a spring clothes changeover work bee in early April. Hope you'll plan to help us. The date will be announced in the April Sodalite.

## Litchfield Community Park

Is open for a day in the park-any day! Snowshoe or hike in from the town office parking lot. We have snowshoed in down by the sand pile. Follow the trail into the park. Have a picnic on our picnic tables, have the children slide down some of the wonderful snow-covered hills, or cross-country ski. We have seen a variety of animal tracks. Get outside the rest happens naturally!



**William R. Bold Veteran Legion Post 181** would like to thank everyone for their help in identifying this picture. The items found in the flag were returned to the family. Again, thank you!



**Lifesaving Tips:** Shovel clear a second exit from your home so you could get out if the primary entrance was unavailable. Also, if you haven't replaced your smoke detector battery, do so now. A \$2.49 life saver is worth the investment!

### Winter Nature Day Camp

The Friends of the Cobbossee Watershed's annual Winter Nature Day Camp will be held during February school vacation week at Camp Mechuwana on Lower Narrows Pond in Winthrop. Two 2-day camp sessions will be offered- February 20 & 21 and February 22 & 23, 2018. Both sessions, open to children in grades 3-5, will run from 9 a.m. to 3 p.m. each day and will include a mixture of both indoor and outdoor activities, including snowshoeing, winter tracking and a variety of games. Our culminating activity will be learning to ice fish with Ryan Burton of the Cobbossee Watershed District! Cost for each 2-day camp session is only \$90/pp and includes the use of all equipment along with afternoon cocoa and snack. Early registration is highly recommended as space is limited to only 20 campers per session! Registration forms can be downloaded

at [www.watershedfriends.com](http://www.watershedfriends.com). For more information, please contact Cami Wilbert, Education & Outreach Director at 621-4100 or [camil@watershedfriends.com](mailto:camil@watershedfriends.com).

### Litchfield Recreation

Is currently accepting registrations for baseball, softball and t-ball. Registration forms will be going home through the schools or can be picked up at the Litchfield Town Office. The cost for baseball and softball is \$50 per child and t-ball is \$30 per child. If anyone has any questions they may contact Tiffany Caton, Recreation Director on either the Litchfield Youth Recreation Facebook page or by email ([t.caton@litchfieldmaine.org](mailto:t.caton@litchfieldmaine.org))

**Smithfield Plantation Trustees** will be meeting Feb. 14, 2017 at 5:30 at the town office



### Town Manager/Clerk's Corner:

**Office closures:** The Town Office will be closed on Monday, February 19th for President's Day.

**Survey:** *Surveys from January's Sodalite may be dropped off at the Town Office (or mailed). Surveys are due by February 28th.*


**Transfer Station:** Final installation of the single stream recycling compactor has been delayed due to recent winter storms. We hope to start the new recycling process before the end of February, weather permitting. As a reminder, once the compactor is up and running, recyclable tin, glass, metal and paper can be combined in any clear plastic bags and deposited in the compacting container. Cardboard will be recycled separately, and you will stack your flattened cardboard inside a second container near the compactor. Following initial distribution of free clear bags, residents are expected to provide their own. At least one local store will carry clear plastic trash bags for purchase. **On another note, the bottle drive addition** to the Swap Shop building has been completed, other than putting siding on the building. This new addition was accomplished by Litchfield Boy Scout Travis Nadeau as his Eagle Scout project. Travis was able to acquire donations from many businesses and organizations throughout Kennebec county, including Litchfield's Tacoma Lake Association and Litchfield American Legion Post 181 to obtain the materials necessary to construct the addition. All labor to construct this addition was donated as well. The bottle drive addition is divided into three rooms that allow people to donate returnable bottles and can to support the following Litchfield nonprofit organizations: Litchfield Boy Scout Troop 698, American Legion Post 181 and the Tacoma Lake Association. Congratulations to Travis Nadeau and all the contributors on this project for an outstanding achievement!

**Snow removal:** "Shelving," or winging back the layers of snow on road-side snow banks to make room for more snow is what our plow drivers have been doing this winter to ensure room for more snow and snow melt. This practice makes allowance for additional snow and gives water a place to go during a thaw.

**Positions are open** on our Recreation Committee, as well as one associate member position on the planning board. Please contact the Town Office for information (268-4721).

**Upcoming meetings** at the Town Office: Planning Board, Feb 1st, 5:30; Select Board, Feb 12th and 26th, 6:30 pm; Recreation Committee, Monday, Feb 12th, 6:30 pm; Conservation Commission, Feb 8th, 6:30pm; Budget Committee, Feb 19th, 6:30 pm. Check the Town website home page for corrections

## February Community Calendar

1 Thur	<b>Planning Board</b> , 5:30pm, Town Office	16 Fri	<b>Town Office</b> , closed <b>Transfer Station</b> , 8a.m.-4p.m. <b>Transfer Station Swap Shop</b> , 10a.m.-2p.m.
2 Fri	<b>Town Office</b> , closed <b>Transfer Station</b> , 8a.m.-4p.m. <b>Transfer Station Swap Shop</b> , 10a.m.-2p.m.	17 Sat	<b>Transfer Station</b> , 8 a.m.-4 p.m. <b>Academy Thrift Store</b> , 9 a.m.-noon <b>Transfer Station Swap Shop</b> , 10 a.m.-2 p.m.
3 Sat	<b>Transfer Station</b> , 8 a.m.-4 p.m. <b>Academy Thrift Store</b> , 9 a.m.-noon <b>Transfer Station Swap Shop</b> , 10 a.m.-2 p.m. <b>Amer. Legion Ladies Aux</b> , Legion Hall, 10am <b>Lit. Sportsman's Club</b> ; Public Bean Supper & Music Jam, Supper 5pm, Music 6pm	18 Sun	<b>Senior Advisory Comm.</b> , Center, 10am
4 Sun	<b>Lit Sportsman's Club</b> -Country Sunday, live music noon—4:30pm	19 Mon	<b>Town Office Closed—President's Day</b>
5 Mon			
6 Tues	<b>First Responders Meeting</b> , Station, 6:30pm		<b>Budget Comm.</b> 6:30pm, Town Office
7 Wed	<b>TOPS</b> -6:30pm; Carrie Ricker School	20 Tue	<b>Masons</b> -Masonic Hall, 7:30pm <b>Fire Rescue Station clean-up</b> , 6:00pm <b>Fire/Rescue Assoc.</b> , Station, 6:30pm <b>Fire/Rescue Meeting</b> , Station, 7:00pm
8 Thur	<b>Conservation Committee</b> -6:30pm, Town Off	21 Wed	<b>TOPS</b> -6:30pm; Carrie Ricker School
9 Fri	<b>Town Office</b> , closed <b>Transfer Station</b> , 8a.m.-4p.m. <b>Transfer Station Swap Shop</b> , 10a.m.-2p.m.	22 Thur	
10 Sat	<b>Transfer Station</b> , 8 a.m.-4 p.m. <b>Academy Thrift Store</b> , 9 a.m.-noon <b>Transfer Station Swap Shop</b> , 10 a.m.-2 p.m.	23 Fri	<b>Town Office</b> , closed <b>Transfer Station</b> , 8a.m.-4p.m. <b>Transfer Station Swap Shop</b> , 10a.m.-2p.m.
11 Sun		24 Sat	<b>Transfer Station</b> , 8 a.m.-4 p.m. <b>Academy Thrift Store</b> , 9 a.m.-noon <b>Transfer Station Swap Shop</b> , 10 a.m.-2 p.m.
12 Mon	<b>Lit. Selectmen's Meeting</b> -6:30pm, Town Off <b>Lit. Recreation Comm</b> —6:30pm, Town Off <b>Lit. Sportsman's Club Meet</b> —7:00pm <b>4H Creators Club</b> -5pm; Carrie Ricker School	25 Sun	
13 Tue		26 Mon	<b>Lit. Selectmen's Meeting</b> -6:30pm, Town Office <b>4H Creators Club</b> -5pm; Carrie Ricker School
14 Wed	<b>TOPS</b> -Carrie Ricker School-6:30pm <b>RSU4 School Board-OHHS</b> -6:30pm <b>Smithfield Plantation Trustees</b> , 5:30pm Town Office	27 Tue	
15 Thur	<b>Senior Advisory Comm</b> ; 10am; Senior Center	28 Wed	<b>TOPS</b> -Carrie Ricker School-6:30pm <b>RSU4 School Board-OHHS</b> -6:30pm <b>Franks&amp;Beans</b> , Legion Hall, 6:30pm <b>American Leg. Post 181</b> , Legion Hall 7pm

# BOX HOLDER

## Contents:

1. Historical Society, Senior Center Corner
2. Town Manager/Clerk's Report
3. January Calendar
4. Newsletter Deadline, Road Advisory Committee

ECRWSS  
PRSR STD  
U.S. Postage  
PAID  
Litchfield, ME  
Permit #2

*The Litchfield Sodalite*  
Litchfield Town Office  
2400 Hallowell Road  
Litchfield, ME 04350  
Tel.: 207-268-4721 FAX: 207-268-2196  
[sodalite@litchfieldmaine.org](mailto:sodalite@litchfieldmaine.org)  
[www.litchfieldmaine.org](http://www.litchfieldmaine.org)  
Open: Mon.: 8:30 a.m.—7:00 p.m.  
Tue.—Thu.: 8:30 a.m.—6:00 p.m.  
Closed: Every Fri.

### Report from the Road committee on right of way invasive plants:

The Road Committee has advised and received the support of the Select Board to pursue options for control of non-native invasive plants in the 25' Town road right of way. In order for the water to drain off the road properly and extend the life of the road surface the Public Works Department must, on a 3 to 5-year rotation, recreate ditches approximately 6' from the edges of the roads. They remove the sand and soil but also the plants that have become established there, spreading the problem plants in truckloads of 'fill'. In a road side survey of Town roads invasive species were found on all roads. Our current focus will continue to be on the 8' tall, fast and continuously spreading Japanese Knotweed or Bamboo, which creates a 'desert' beneath it as no native animals eat or live in it. The roots travel 3' underground for 30+' and so you often see it on both sides of a road and the smallest pieces of the roots or above ground nodes can create a new plant. Control is done by mowing (with proper disposal of debris), covering with solid such as linoleum or a targeted well-timed spray. We will again this year be doing a Town wide Japanese Knotweed spray day in June. Contact the Town office if you want to have an infestation of knotweed on your property sprayed at your expense on the same day as the Town roadside spraying. It is hoped that each landowner might try to control the invasive species on their property to keep Japanese knotweed from spreading to neighbors and, in cases near water, entering and colonizing our streams. Getting infestations while small is key to invasive plant control.

### Mar. Issue Deadline:

Feb. 20, 2018, 5 p.m.  
Deliver material in any of the following ways:

#### E-mail

**([sodalite@litchfieldmaine.org](mailto:sodalite@litchfieldmaine.org))**

**U.S. mail to: Town Office, 2400 Hallowell Rd.**

#### Oak Hill High

**School class of 2018**  
You can donate your bottles/cans throughout the year at Billy's Bottle Barn on the Small Rd. Fmi email [scottwks@gmail.com](mailto:scottwks@gmail.com) or call Scott Weeks 242-3352. All proceeds will benefit Project Graduation.